

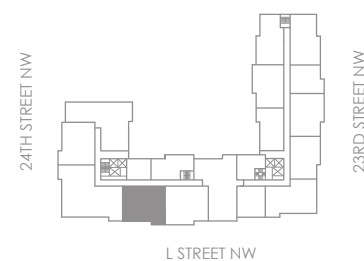
west\light

1111 24TH STREET, NW

UNITS: 84
FLOORS: 8
UNIT TYPE: D

2 BEDROOMS / 2 BATHS / DEN
1,723 SQ FT (160 SQ M)

9' - 4" CEILING HEIGHTS LIVING ROOM / DINING ROOM
8' - 2" ELSEWHERE (EXCEPT 8' - 0" IN ENTRY CLOSET)



8TH FLOOR BUILDING KEY

