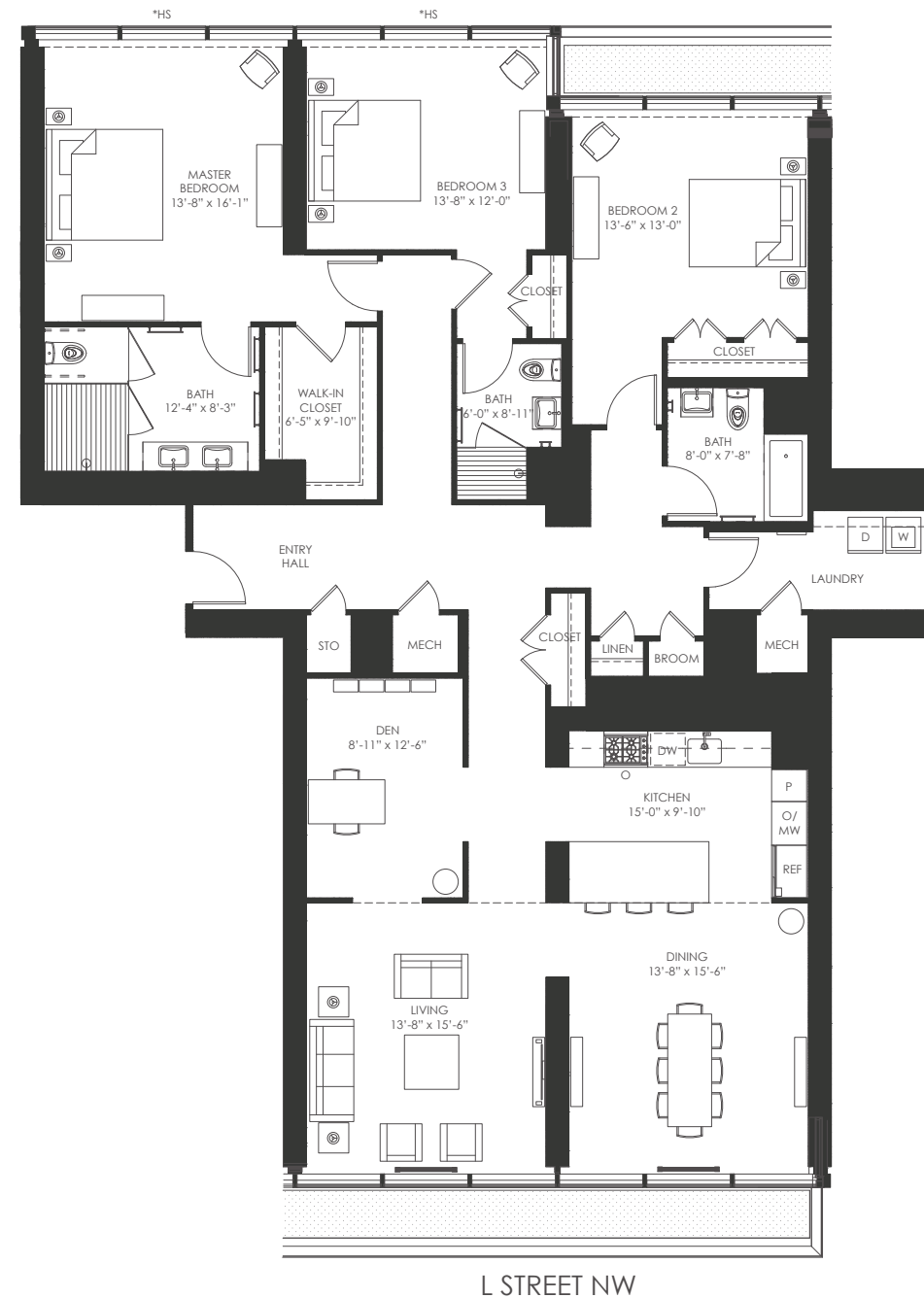


westlight

1111 24TH STREET, NW

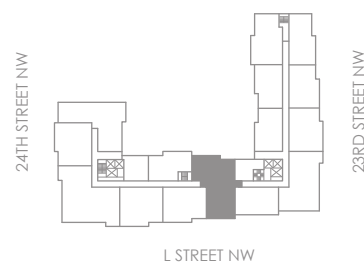
COURTYARD



UNIT: 96
FLOORS: 9
UNIT TYPE: F

3 BEDROOMS / 3 BATHS / DEN
2,415 SQ FT (224 SQ M)

9' - 4" CEILING HEIGHTS LIVING ROOM / DINING ROOM
8' - 2" ELSEWHERE (EXCEPT 8' - 0" IN ENTRY CLOSET)



9TH FLOOR BUILDING KEY

